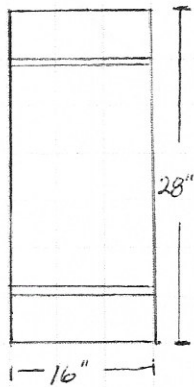


Kitchen Boa

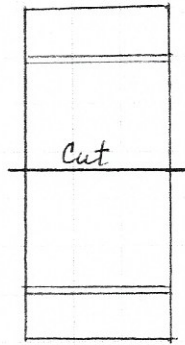
Supplies: one bathroom face towel
one-fourth yard fabric

Step 1:

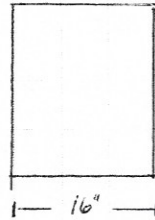
Bathroom face towel



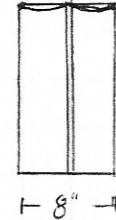
Cut in half



Wrong side up



Fold (R) + (L) sides to center



Repeat



Stitch across top to keep folds in place

Step 2: Sew $\frac{1}{4}$ yd x wof - long edges sewn together (RST) to form a 40" tube of fabric.

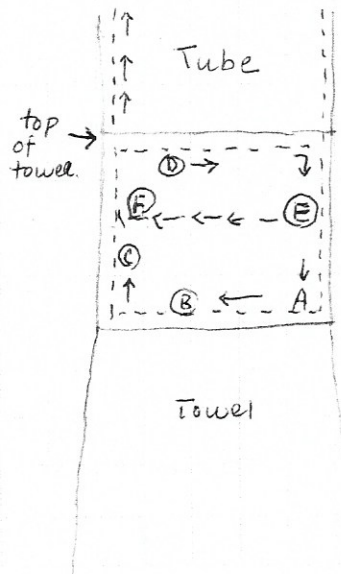
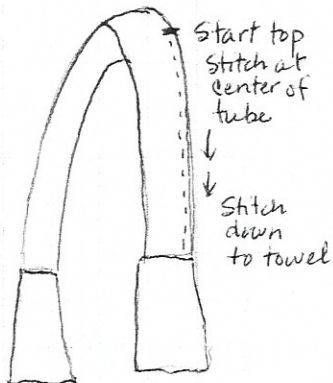
Turn inside out.

Iron. Be sure seam is at center of wrong side of tube.

Turn $\frac{1}{2}$ " to 1" fabric of each end of tube into the inside. Iron flat.

Step 3: Stuff top of towel into tube 1" to 1 $\frac{1}{2}$ ". Pin in place. Repeat on opposite side of tube.

Step 4: Starting in the center of the tube, top stitch $\frac{1}{8}$ " to $\frac{1}{4}$ " from edge. Stitch down one side to the end (where towel is).



- Ⓐ stitch to bottom of tube
- Ⓑ Rotate + stitch across
- Ⓒ Rotate + stitch to $\frac{1}{4}$ " of top of towel
- Ⓓ stitch across
- Ⓔ Rotate down to halfway + stitch across
- Ⓕ Rotate up + stitch along opposite side of tube to the second towel.